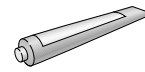


STANDARD EQUIPMENT



Bull point
(For demolishing concrete)
(Part No. A-80787)



Grease for bit
(Part No.181573-3)



Carrying case
(Part No.824564-8)

OPTIONAL ACCESSORIES



Bull point
(For demolishing concrete)
280 mm (Part No. A-80787)
400 mm (Part No. A-80793)



Scaling chisel
(Wide chisel for chipping away
scale or dried concrete spatter)
50 mm x 400 mm (Part No. A-80824)



Tile chisel
(Wide chisel for chipping away
cemented tile)
50 mm x 300 mm (Part No. A-80830)



Cold chisel
(For chipping, edging, channeling and
breaking away larger chunks of concrete)
25 mm x 280 mm (Part No. A-80802)
25 mm x 400 mm (Part No. A-80818)



Bushing tool
(For concrete surface removal)
60 mm x 60 mm
(Part No. A-19881)



Clay spade
(For digging in clay, scale etc.)
105 mm x 400 mm (Part No. A-17653)



Rammer
(For tamping operations)
140 mm (Part No. A-19875)



Shank
(For bushing tool and rammer)
(Part No. A-19897)



Hammer grease (30 g)
(Part No.181490-7)



Safety goggles
(Part No. 191686-2)

SPECIFICATIONS

Blows per minute	950 —1,900 (Model HM1202C) 1,900 (Model HM1202)
Continuous rating Input	1,450 W
Overall length	578 mm (22-3/4")
Net weight	9.3 kg (20.5 lbs)
Power supply cord	5 m (16.4 ft.)

Note: The standard equipment for the tools shown may differ from country to country. Consult your local Makita catalogue or representative to know the standard equipment for Makita tools sold in your area.

PRINTED IN JAPAN Z14268-2 1999-7

Makita

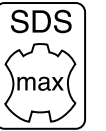


Double Insulation

Demolition Hammers

Model HM1202C (Electronic speed control, Soft start,
Variable speed)

Model HM1202 (Single speed)



Much lighter yet even more breakup!
— Top of its class!

Now the new face has lined up in our SDS-max series!

Makita Corporation

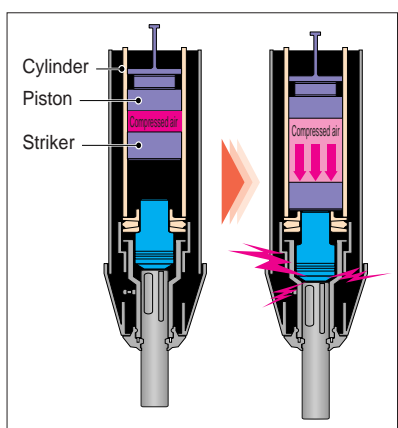
3-11-8, Sumiyoshi-cho,
Anjo, Aichi 446-8502, Japan

Considerable strong demolishing power in this class, however, low vibration

Demolition Hammers

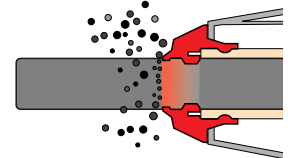
HM1202C/HM1202

The lightest in this class!
only **9.3kg**



Excellent demolishing power and very low vibration. Good controlled striker & piston action by compressing air in the cylinder with ideal timing. Consequently comfortable and effective work with considerable demolishing power, however, quite low vibration.

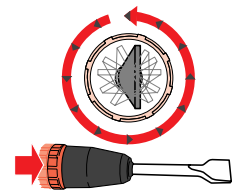
High dust-proof construction
The Tool Holder Cap shuts out the dust and protects the machine from the damage.



Bit inserts easily: just slide sleeve down to remove.



12 different bit angle settings: You can turn bit to desired angle position, even with bit inserted in barrel.



ON-OFF slide switch. Ideal for long, continuous operation.



Big D-form handle
Painless work with big D-form handle which provides the operators easy hammering, especially in the vertical direction, because of so big space in the handle that operators can hold it with both hands.



Service reminder light tells you 8 hours ahead of time to replace worn carbon brushes. Another warning light indicates upcoming damage to cable, trigger and other parts.



Electronic variable speed control dial allows you to match speed to job. 6 different rpm and BPM settings, respectively. (Model HM1202C)



Grip swivels 360° to your desired position. 8 different settings (back and forth).



SDS-max bit providing the hammering power effectively. SDS-max shank which fits the bit holder precisely, enable to demolish exactly and effectively without swinging, only by pressing hammer bit on your approaching point lightly.

