



Hypoid Saw 5377MG 185mm (7-1/4")

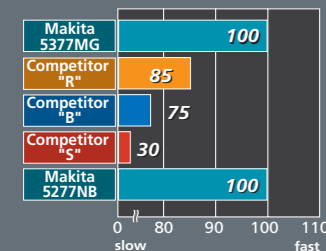


Comparison of Cutting Efficiency

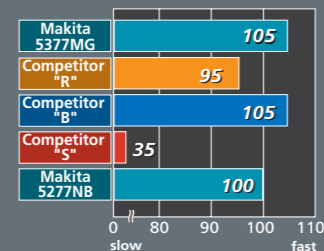
Note: 1. It may differ under some conditions.
2. Numbers in the charts below are relative values when the capacities of Makita Model 5277NB are indexed at 100.

Blade used:
*185mm(7-1/4") T.C.T saw blade supplied with each model

- Test material: 2" x 11-3/4" (50mm x 300mm) Lauan
- Bevel angle: 0 degree

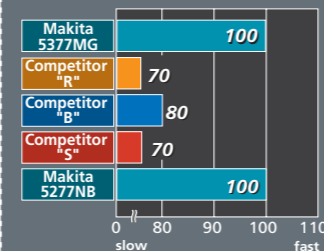


- Test material: 2 x 10 SPF timber
- Bevel angle: 45 degrees

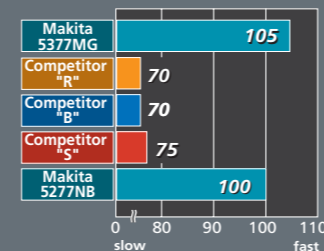


Blade used:
185mm(7-1/4") T.C.T saw blade supplied with Makita 5377MG

- Test material: 2" x 11-3/4" (50mm x 300mm) Lauan
- Bevel angle: 0 degree



- Test material: 2 x 10 SPF timber
- Bevel angle: 45 degrees



* The number of the teeth of the saw blade: 24T=Makita 5377MG, 5277NB, Competitor R, B 40T=Competitor S

Hypoid Saw



5377MG 185mm (7-1/4") 154

Continuous rating Input Capacity 15A (120V)
at 90 degrees: 60mm (2-3/8")
at 45 degrees: 44mm (1-3/4")
at 50 degrees: 40mm (1-9/16")

Blade diameter 185mm (7-1/4")
No load speed 4,500rpm
Overall length 450mm (17-3/4")
Net weight 5.9kg (13lbs)
Power supply cord 3.0m (9.8ft)

Standard Equipment
T.C.T Saw Blade, Hex Wrench
Accessories
Guide Rule (Part No. 165153-3)

Items of standard equipment and specifications may differ by country or area.

Makita Corporation

3-11-8 Sumiyoshi-cho, Anjo, Aichi, 446-8502 Japan

PRINTED IN JAPAN Z23279-Z 2007-05

Satisfy Professional's Needs



Hypoid Saw 5377MG 185mm (7-1/4")

MAGNESIUM

Less Weight but Sturdy



MAGNESIUM

Lightweight at Only 13lbs (5.9kg)



Using magnesium diecast for Base Plate and Blade Case, tool weight has been reduced without loss of durability and power.

Powerful
15AMP
Motor

Sturdy magnesium
Motor Housing

Use of Bolt for easy remove/
installation of base.

Aluminum Scale plate
with easy-to-read
calibrations
Notches to align with cutting line
for bevel angle 0 degrees and 45 degrees

Safety Cover
Designed to action smoothly.

Ergonomic Top and Rear Handles

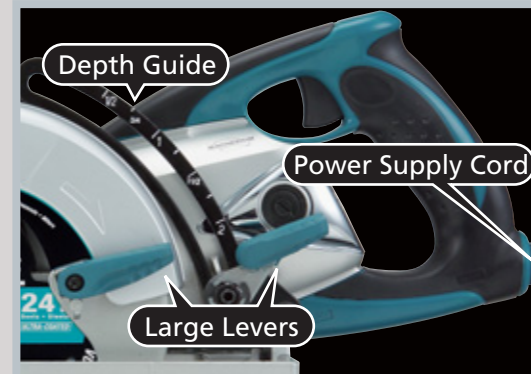
- Positioned, angled, and contoured for best fitting and easy handling.
- Rubberized Rear Handle for non-skid operation.



Top Handle



Rear Handle



Depth Guide

Power Supply Cord

Large Levers

Depth Guide with Easy-to-Read Scale

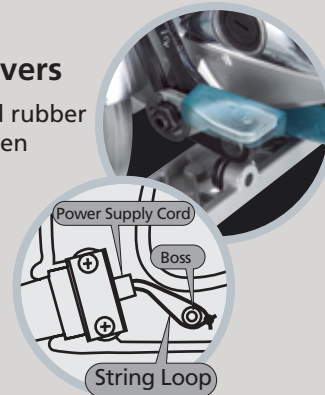
Features large, white numbers and calibrations on black background.

Large Rubberized Levers

All levers feature metal and rubber construction; operable even if the rubber breaks off.

String Loop

Holds Power Supply Cord to prevent disconnecting.



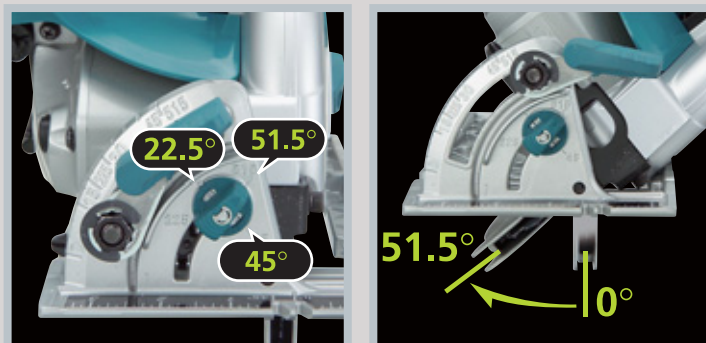
Power Supply Cord

Boss

String Loop

Max Bevel Capacity 51.5 degrees

Knob and Stopper Construction for Bevel Adjustment with Positive Stops at 22.5 and 45 degrees.



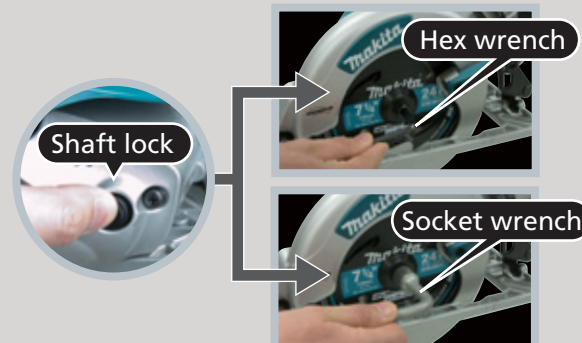
22.5° 51.5°

45°

51.5° 0°

Practical Blade Fastening Bolt

Can be tightened/ loosened with either socket wrench or hex wrench.



Hex wrench

Shaft lock

Socket wrench



Hex Wrench Holder

Built-in Sky Hook

