



Satisfy Professional's Needs

Slide Compound Saw

LS0714L/ FL, LS1013L, LS1214L

190mm (7-1/2")

255mm (10")

305mm (12")



LASER

Let the blade sink in red.



Makita's Unique Laser Alignment System

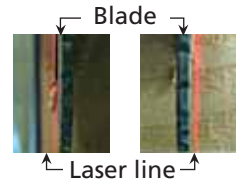


- Allows for easy cut line alignment.

- The laser guide can be turned on/off by an independent switch.



- The laser line can be projected on either side of the blade.

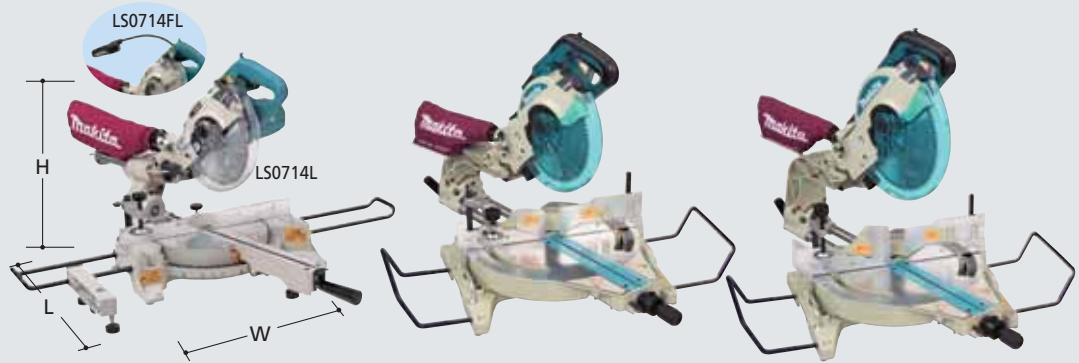


- The laser guide is mounted on the blade case, minimizing the misalignment between the laser reference line and actual cut line.



Slide Compound Saw **LS0714L / FL** 190mm (7-1/2") **LS1013L** 255mm (10") **LS1214L** 305mm (12") 153

-  Double Insulation
-  Laser Marker
-  Dust Collecting
-  Bevel Cutting L45 R5 (LS0714L / FL only)
-  Bevel Cutting 45 LR (LS1013L, LS1214L only)
-  Electric brake (LS1013L, LS1214L only)
-  Soft Start (LS1013L, LS1214L only)
-  Electronic Speed Control (LS1013L, LS1214L only)
-  Built-in Job Light (LS0714FL only)



Specification

	LS0714L / FL 190mm (7-1/2")	LS1013L 255mm (10")	LS1214L 305mm (12")
Continuous rating Input Capacity	1,010W	1,430W	1,650W
at 90 degrees	: 52mm x 300mm (2-1/16" x 11-3/4")	at 90 degrees : 91mm x 310mm (3-5/8" x 12-1/4")	at 90 degrees : 115mm x 308mm (4-1/2" x 12-1/8")
at 45 degrees	: 52mm x 212mm (2-1/16" x 8-3/8")	at 45 degrees : 91mm x 220mm (3-5/8" x 8-5/8")	at 45 degrees : 115mm x 218mm (4-1/2" x 8-9/16")
Blade diameter	190mm (7-1/2")	255mm - 260mm (10"-10-1/4")	305mm (12")
No load speed	6,000rpm	3,700rpm	3,200rpm
Dimensions (L x W x H)	670mm x 430mm x 458mm (26-3/8" x 17" x 18")	715mm x 520mm x 640mm (28-1/8" x 20-1/2" x 25-1/4")	723mm x 520mm x 718mm (28-1/2" x 20-1/2" x 28-1/4")
Net weight	12.8kg (28.2lbs) / 13.1kg (28.9lbs)	22kg (48.5lbs)	24kg (52.9lbs)
Power supply cord	2.5m (8.2ft)	2.5m (8.2ft)	2.5m (8.2ft)

Standard Equipment

T.C.T. Saw Blade, Dust Bag, Holder Set, Vertical Vise, Socket wrench, Triangular Rule

Items of standard equipment and specifications may differ from country to country.



Makita Corporation
3-11-8, Sumiyoshi-cho, Anjo, Aichi 446-8502, Japan