



Cordless Recipro Saw
BJR182

Satisfy Professional's Needs



Simple
&
Practical



Lithium-ion eXtreme Technology



Metal Cutting Efficiency

Cut through a carbon steel pipe of 3mm thickness and 34mm diameter.



The numbers in the charts are relative values when the capacity of Competitor "D"'s product is indexed at 100.



Reliable, Dust and Drip-Proof Tool Head Mechanism

Ergonomically Designed Handle with rubberized soft Grip

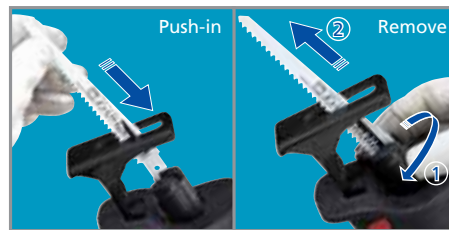
Toolless Shoe Adjustment

Shoe is adjustable to 5 positions by merely pushing a button.



Toolless Blade Change

(Toolless Push-in Lock System) Enables extremely quick blade changes.



Air Flow sweeps away sawdust

Front side of the slider is protected against sawdust.



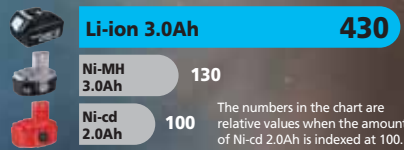
EXTREME STAMINA

Life time work volume

430%

in comparison with Makita Ni-cd 2.0Ah batteries

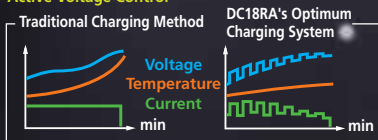
Total Power Delivery Amount of each battery's service lifetime



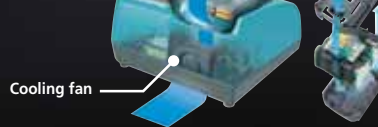
OPTIMUM CHARGING SYSTEM

Makes battery life longer because this charging system takes care of battery by following functions.

- :: Communicates with individual battery.
- :: Recognizes ID of battery and its history.
- :: Analyzes its condition; Battery may have been abused by heat or over-discharging, or weakened by cycle age.
- :: Knows how to look after each MAKSTAR battery to MAXIMIZE CYCLE LIFE + WORK VOLUME.
- :: Charges optimum and gentle way with Active 3 Controls; Active Current Control, Active Thermal Control, Active Voltage Control



:: Cools down inside battery



18V Lithium-ion Battery BL1830

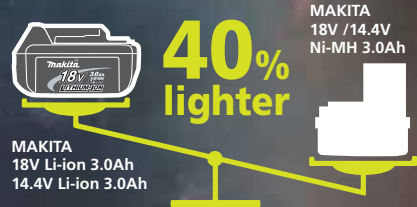
14.4V Lithium-ion Battery BL1430



Charger: DC18RA

Charging time **22min.**

LIGHTWEIGHT & COMPACT



ANYTIME CHARGE

NO MEMORY EFFECT
No discharging required

SHOCK ABSORBING

HEAVY DUTY PACK

LONGTIME STORAGE

LOW SELF DISCHARGE

FIRM HOLDING

MULTI CONTACT

Cordless Recipro Saw

- Variable Speed
- Electric Brake
- Carrying Case



BJR182

441

Capacity in pipe (dia.)	130mm (5-1/8")
in wood	255mm (10")
Length of stroke	28mm (1-1/8")
Strokes per minute (spm)	0-2,900
Dimensions (L x W x H)	449 x 91 x 241mm (17-3/4" x 3-5/8" x 9-1/2")
Net weight	3.5 kg (7.7 lbs)
Voltage	18V

Standard Equipment

Fast Charger, Battery Cartridge, Recipro Saw Blade Set

Items of standard equipment and specifications may differ from country to country.

Makita Corporation

3-11-8 Sumiyoshi-cho, Anjo, Aichi, 446-8502 Japan

PRINTED IN JAPAN Z23345-2 2007-08