



Satisfy Professional's Needs

Auto Feed Screwdriver 6841R



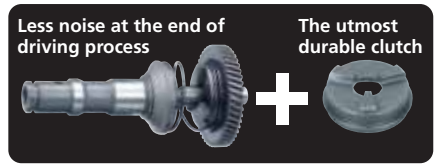
More efficient work
Magazine contains 100 screws

Hi Speed
6,000 rpm

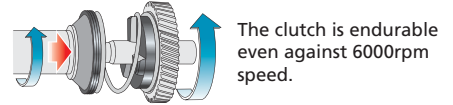
More Screws, Better Handling, Less Loss Time!



Quiet and quick shooting with Silent Clutch
Silent Clutch Features high durability. Ensures high operation efficiency with direct drive transmission in reverse rotation.



When the bit pushes screw, synchronized rotation starts for smooth engagement.



The clutch is endurable even against 6000rpm speed.

Indicator line for feeding position

Driving depth adjustment by turning knob

Reversing switch
• Operable by one hand
• Easy reversing by depressing switch only.

Lock-On button for Continuous Operation

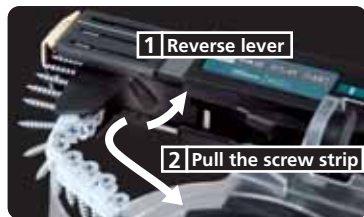
Ergonomically designed handle with rubberized soft grip
provides comfortable grip and more control while minimizing hand fatigue and pain.

Hook
• attachable to either side of the tool.
• 2 position 10mm or 20mm distance from the tool

Externally accessible carbon brush

Coil tape collated screws capacity 100 screws/ coil
4mm x 25mm to 41mm (5/32" x 1" to 1-5/8")

Screw strip also can be removed in the direction of the arrow by Reverse lever.

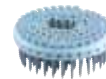


3-stage stopper base setting to accommodate various screw lengths.



Optional Accessories

Coil plastic collated screws



Drywall to Steel (shank Dia. 3.5mm)		Drywall to Wood (shank Dia. 3.8mm)	
Length (mm)	Part No.	Length (mm)	Part No.
25	F-32830	25	F-32869
28	F-32843	28	F-32872
41	F-32856	32	F-32885
		41	F-32898

Extension handle

Part No. 194500-1



Phillips bit 2-117

Part No. 784248-9



Auto Feed Screwdriver

- Double Insulation
- Reversing
- Carrying Case



6841R

411

Continuous rating Input	470W
Capacity Drywall screw:	4 x 25-41mm (5/32" x 1"-1-5/8")
Bit size Hex Shank :	6.35mm (1/4")
No load speed (rpm)	6,000
Dimensions (L x W x H)	333 x 83 x 247mm (13-1/8" x 3-1/4" x 9-3/4")
Net weight	1.9kg (4.2lbs)
Power supply cord	4.0m (13.1ft)

Standard Equipment Phillips Bit (3pcs.)

Items of standard equipment and specifications may vary by country or area.

Makita Corporation

3-11-8 Sumiyoshi-cho, Anjo, Aichi, 446-8502 Japan

PRINTED IN JAPAN Z23447-2 AJ-AC