



Satisfy Professional's Needs

Finishing Sander
BO3711 / BO3710

Smooth Sanding with lower center of gravity



Photo: BO3711

Ergonomically best possible gripping



fits user's hand perfectly, providing sure grip and easy handling whether in single- or double-handed operation.



Compact and lightweight design for easy handling and high maneuverability

Variable speed control by dial (BO3711 only)

Sanding speed is variably adjustable to suit workpiece.



Rubberized soft grip

provides more comfort and better control while minimizing hand fatigue and pain.



Available with Dust bag or Dust box



Sturdy cylindrical Motor Housing



Photo: BO3711

High dust extraction

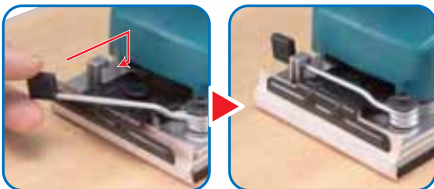


Also connectable to vacuum cleaners with hose



Easy-to-operate paper clamp

ensures easy installation/removal of paper with rolled clamber's edges.



Rigid aluminum foot with sponge sleeve

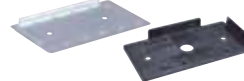
provides high durability and effective vibration-absorbing performance.



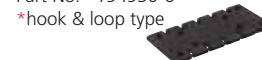
Accessories

Punch plate
(For allowing dust extraction through the base)

Metal: Part No. 192989-7
Plastic: Part No. 194947-9



Pad complete
For use with Abrasive paper
Part No. 194929-1
Part No. *194930-6
*hook & loop type



Dust box assembly

Part No. 135246-0

use with Filter set
Part No. 195133-5
(w/o mark of origin)

Dust bag assembly

Part No. 140115-2

Hose Inner dia.28mm
Including front cuff 22
Part No. A-34235



Finishing Sander

- Double Insulation
- Variable Speed (BO3711 only)
- Dust Collecting



BO3711 / BO3710

64

Continuous rating Input	190W
Pad size	93 x 185mm (3-5/8" x 7-1/4")
Abrasive paper size	93 x 228mm (3-5/8" x 9")
Orbits per minute (opm)	4,000-11,000 : BO3711 11,000 : BO3710
Dimensions (L x W x H)	253 x 92 x 154mm (10" x 3-5/8" x 6-1/16")
Net weight*	1.6kg (3.5lbs)
Power supply cord	2.0m (6.6ft)

*weight according to EPTA-Procedure 01/2003

Standard Equipment Abrasive Paper, Punch Plate, Dust Bag or Dust Box

Items of standard equipment and specifications may vary by country or area.

Makita Corporation

3-11-8 Sumiyoshi-cho, Anjo, Aichi, 446-8502 Japan

PRINTED IN JAPAN Z23471-2 AJ-BB