

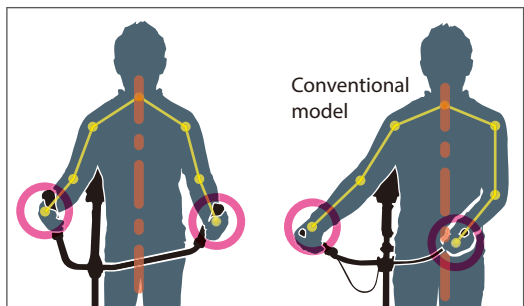


Petrol Brushcutter RBC412U 40.2mL

Asymmetrical design handle bar

Designed so that the vertical center line of the handle bar stays aligned with that of user

- Enables user to work in a comfortable posture with less fatigue throughout operation.
- Provides easy handling.



The rigid drive shaft, durable gear head and aluminum post ensure top-performance all day.



Comfortable shoulder harness with waist pad and double shoulder straps

Designed so that the vertical center line of the harness always stays aligned with that of user, distributing weight evenly to both shoulders

Protector, Harness and Brushcutter blade may vary by country or area.



- Powerful and reliable 40.2mL engine designed for professionals and minimizing your maintenance job.
- Perfect balance and an excellent weight-to-power ratio.
- Convenient swivel-post for any cutting positions.
- Ignition system : Solid state ignition.



CDI Capacitor Discharge Ignition

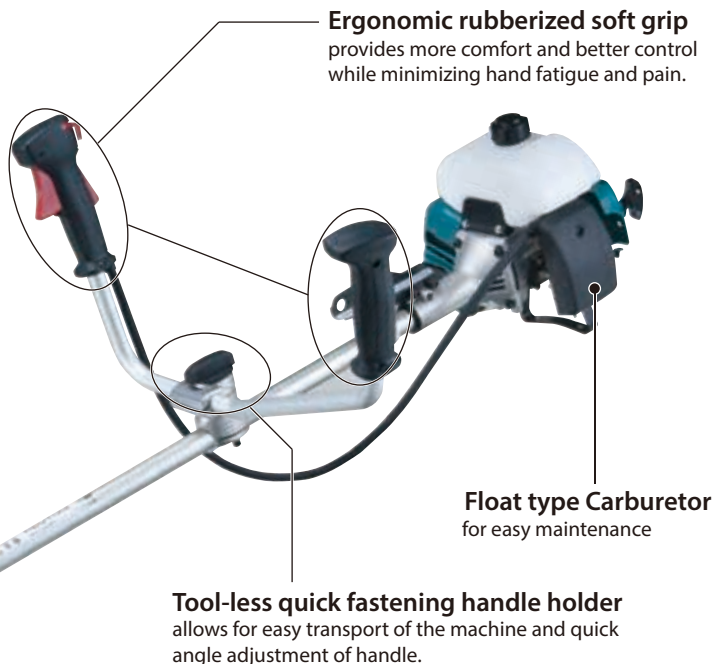
Displacement	40.2mL
Engine power	1.40kW / 2.0PS
Fuel mixture	25 : 1
Fuel tank	1.1L
Spindle size	M10 x 1.25LH
Dimensions (L x W x H)	1,707x630x520mm (67-1/2"x24-3/4"x20-1/2")
Net Weight*	7.4kg (16.3lbs)

Standard Equipment :

Blade or Nylon Cutting Head (for some countries), Universal Guard (=Protector) (for some countries)
Shoulder Harness with Double Shoulder Straps, Waist Pad, Socket Wrench, Hex Wrenches, Accessory Bag

Protector, Harness and Brushcutter blade may vary by country or area.

Net weight : without blade, harness and fuel



Makita Corporation

3-11-8 Sumiyoshi-cho, Anjo, Aichi, 446-8502 Japan